

# Benefits for 2017 - 2018

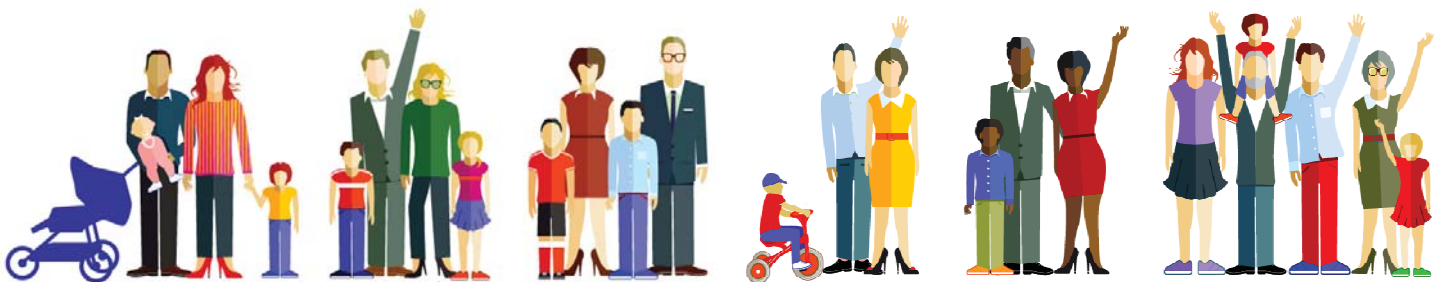
## Vision Coverage



### Summary of Coverage

Plan Name	Eye Med Vision
Plan Features	In-Network
Vision Exam	\$10
Retinal Imaging	Up to \$39
Lenses	
Single	\$25
Bifocal	\$25
Trifocal	\$25
Progressive	\$90-135 Copay
Frames	\$0 Copay; \$120 Allowance, 20% off balance over \$120
Elective Contact Lenses	\$0 Copay, \$120 Allowance
Medically Necessary Contact Lenses	\$0 copay, Paid-in Full
Frequency (Months)	
Exam	12
Lenses	12
Frames	12
Contacts	12

Semi-Monthly Rates	
Employee	\$3.39
Employee + 1	\$6.44
Family	\$9.45





# Integrity Educational Services

## Additional discounts

**40% OFF**

Complete pair of prescription eyeglasses

**20% OFF**

Non-prescription sunglasses

**20% OFF**

Remaining balance beyond plan coverage

These discounts are not insured benefits and are for in-network providers only.

## Take a sneak peek before enrolling

- You're on the **Insight Network**

For a complete list of in-network providers near you, use our Enhanced Provider Locator on [eyemed.com](http://eyemed.com) or call 1-866-804-0982

- For LASIK providers, call 1-877-5LASER6

## SUMMARY OF BENEFITS

Vision Care Services	In-Network Member Cost	Out of Network Reimbursement
Exam With Dilation as Necessary	\$10 Copay	Up to \$40
Retinal Imaging	Up to \$39	N/A
Frames	\$0 Copay; \$120 allowance, 20% off balance over \$120	Up to \$84
<b>Standard Plastic Lenses</b>		
Single Vision	\$25 Copay	Up to \$30
Bifocal	\$25 Copay	Up to \$50
Trifocal	\$25 Copay	Up to \$70
Lenticular	\$25 Copay	Up to \$70
Standard Progressive Lens	\$90 Copay	Up to \$50
Premium Progressive Lens <sup>A</sup>	\$110 Copay - \$135 Copay	Up to \$50
Tier 1	\$110 Copay	Up to \$50
Tier 2	\$120 Copay	Up to \$50
Tier 3	\$135 Copay	Up to \$50
Tier 4	\$90 Copay, 20% off charge less \$120 Allowance	Up to \$50
<b>Lens Options</b> (paid by the member and added to the base price of the lens)		
UV Treatment	\$15	N/A
Tint (Solid and Gradient)	\$15	N/A
Standard Plastic Scratch Coating	\$15	N/A
Standard Polycarbonate - age 19 and over	\$40	N/A
Standard Polycarbonate - under age 19	\$40	N/A
Standard Anti-Reflective Coating	\$45	N/A
Premium Anti-Reflective Coating <sup>A</sup>	\$57 - \$68	N/A
Tier 1	\$57	N/A
Tier 2	\$68	N/A
Tier 3	20% off Retail Price	N/A
Photochromic/Transitions	\$75	N/A
Polarized	20% off retail price	N/A
Other Add-Ons and Services	20% off retail price	N/A
<b>Contact Lens Fit and Follow-up</b> (Contact lens fit and two follow-up visits are available once a comprehensive eye exam has been completed.)		
Standard Contact Lens Fit & Follow-Up:	\$40	N/A
Premium Contact Lens Fit & Follow-Up:	10% off retail price	N/A
<b>Contact Lenses</b> (Contact Lens allowance includes materials only)		
Conventional	\$0 copay, \$120 allowance, 15% off balance over \$120	Up to \$120
Disposable	\$0 copay, \$120 allowance, plus balance over \$120	Up to \$120
Medically Necessary	\$0 copay, Paid-In-Full	Up to \$210
<b>Laser Vision Correction</b>		
LASIK or PRK from U.S. Laser Network	15% off the retail price or 5% off the promotional price	N/A
<b>Hearing Care</b>		
Hearing Health Care from Amplifon Hearing Network	40% off hearing exams and low price guarantee on discounted hearing aids	
<b>Frequency</b>		
Examination	Once every 12 months	
Lenses or Contact Lenses	Once every 12 months	
Frame	Once every 12 months	

QL-0000031737

<sup>A</sup> Premium progressives and premium anti-reflective designations are subject to annual review by EyeMed's Medical Director and are subject to change based on market conditions. Fixed pricing is reflective of brands at the listed product level. All providers are not required to carry all brands at all levels. Benefits are not provided from services or materials arising from: 1) Orthoptic or vision training, subnormal vision aids and any associated supplemental testing; Aniseikonic lenses; 2) Medical and/or surgical treatment of the eye, eyes or supporting structures; 3) Any eye or Vision Examination, or any corrective eyewear required by a Policyholder as a condition of employment; Safety eyewear; 4) Services provided as a result of any Workers' Compensation law, or similar legislation, or required by any governmental agency or program whether federal, state or subdivisions thereof; 5) Plano (non-prescription) lenses; 6) Non-prescription sunglasses; 7) Two pair of glasses in lieu of bifocals; 8) Services or materials provided by any other group benefit plan providing vision care 9) Services rendered after the date an Insured Person ceases to be covered under the Policy, except when Vision Materials ordered before coverage ended are delivered, and the services rendered to the Insured Person are within 31 days from the date of such order. 10) Lost or broken lenses, frames, glasses, or contact lenses will not be replaced except in the next Benefit Frequency when Vision Materials would next become available. Benefits may not be combined with any discount, promotional offering, or other group benefit plans. Standard/Premium Progressive lens not covered-fund as a Bifocal lens. Standard Progressive lens covered-fund Premium Progressive as a Standard. Benefit allowance provides no remaining balance for future use within the same benefit year. Fees charged for a non-insured benefit must be paid in full to the Provider. Such fees or materials are not covered.

Underwritten by Fidelity Security Life Insurance Company of Kansas City, Missouri, except in New York. Fidelity Security Life Policy number VC-19/VC-20, form number M-9083. This is a snapshot of your benefits. The Certificate of Insurance is on file with your employer.



# Get more and see more with EyeMed



## CHOOSE A DOC

EyeMed members choose from the right mix of thousands of providers—independent eye doctors, your favorite retail stores and everything in between. Find your ideal fit at [eyemed.com](http://eyemed.com) or the EyeMed Members App.



## CREATE AN ACCOUNT

Get special offers with an account on [eyemed.com](http://eyemed.com). Enter your email, choose a password and sign up for emailed savings. Log in 24/7 to view your benefit details or health and wellness information.



## MOBILIZE YOUR BENEFITS

The EyeMed Members App makes your benefits easy to understand—and even easier to use. Find an eye doctor near you, schedule an appointment and manage your vision benefits.

on eye exams and glasses for EyeMed members\*

Learn more about enrolling in EyeMed vision benefits at [enroll.eyemed.com](http://enroll.eyemed.com) and see more of the good stuff

\*Based on a sample transaction on the Insight network with a covered exam and eyewear benefits

